

BASEL- III - PILLAR 3 DISCLOSURE AS ON 30.09.2018

Table DF - 1

Scope of Application

City Union Bank Limited is an old premier private sector bank which was incorporated on 31st October, 1904 with its Registered Office at Kumbakonam, Tamilnadu, India. The Bank was included in the Second Schedule of Reserve Bank of India Act, 1934, on 22nd March 1945. The Bank does not have any subsidiary/Associate companies under its Management.

Qualitative Disclosures:

Summary

Type of Capital	Features
Common Equity Tier I Capital	During the half year ended 30.09.2018, the Bank had allotted 6,71,58,741 equity shares of face value of Re.1/- each pursuant to exercise of 6,23,473 stock options by employees and issue of one bonus equity share for every 10 equity shares of face value of Re.1/- each (1:10) held by the existing shareholders to the tune of 6,65,35,268. As on 30.09.2018, the Equity Share Capital of the Bank stood at Rs. 73.19 crore and the Share Premium account stood at Rs. 836.73 crore.
Tier II Capital	The Bank has not raised Tier II capital during the half year ended 30.09.2018.

Quantitative Disclosures

Sl. No.	Description	Amount (Rs in Crs)	
01.	Common Tier – I Capital - Paid-up Share Capital - Total - Reserves & Surplus Amount deducted from Tier I Capital (if any) - Intangible Assets - Cross holdings Total eligible Tier I Capital	73.19 4065.76 19.67 0.04	4138.95 19.71 4119.24
02.	Tier – II Capital a) Revenue Reserves (Investment Reserve) b) Provision for Unhedged exposure c) Provision for Standard Assets Less: Cross Holdings Total Tier II Capital	2.38 2.62 108.58 0.00	113.58 0.00 113.58
03.	Total Eligible Capital (Tier I and Tier II)		4232.82

1. Scope of Application and Capital Adequacy

Table DF - 2 **Capital Adequacy**

Qualitative Disclosures:

A. A summary discussion of the Bank's approach to assessing the adequacy of its capital to support current and future activities.

In order to strengthen the capital base of banks in India, the Reserve Bank of India in April 1992 introduced capital adequacy measures in banks, based on the capital adequacy framework (Basel I) issued by Basel Committee on Banking Supervision (BCBS). Initially, the framework addressed capital for credit risk, which was subsequently amended to include capital for market risk as well. The Bank has been compliant with regard to maintenance of minimum capital for credit and market risks.

Subsequently, the BCBS has released the "International Convergence of Capital Measurement and Capital Standards: A Revised Framework" (popularly known as Basel II document) on June 26, 2004. Reserve Bank of India has issued final guidelines on April 27, 2007 for implementation of the New Capital Adequacy (Basel II) Framework.

In line with the RBI guidelines, the Bank has successfully migrated to the revised framework (Basel-II) from 31.03.2009. The Bank has continued the Parallel run of Basel II framework continuously tracking the exposures and studied the impact on Bank's Capital to Risk weighted Assets Ratio (CRAR) on a quarterly basis.

Reserve Bank of India issued guidelines based on the Basel III reforms on capital regulation during May 2012, to the extent applicable to banks operating in India. The Basel III capital regulation has been implemented from April 01, 2013 in India in phases and it was decided originally to implement fully as on March 31, 2018. RBI issued detailed Guidelines on Composition of Capital Disclosure Requirements on May 28, 2013. Another circular on "Implementation of Basel III Capital Regulations in India – Capital Planning" has been issued by RBI on March 27, 2014, in which, the transitional period for full implementation of Basel III Capital Regulations in India is extended upto March 31, 2019, instead of March 31, 2018. RBI has issued circular on "Prudential Guidelines on Capital Adequacy and Liquidity Standards – Amendments" on 31.03.2015. The Basel III Capital Regulations have been consolidated in Master Circular – Basel III Capital Regulations vide circular No. DBOD.No. BP.BC.1 / 21.06.201 / 2015-16 dated July 1, 2015.

Under the Basel II framework, the total regulatory capital comprises of Tier I (core capital) and Tier 2 capital (supplementary capital). In order to improve the quality of regulatory capital, the capital will predominantly consist of Common Equity Tier1 (CET1) under Basel III. Non-equity Tier 1 and Tier 2 capital would continue to form part of regulatory capital subject to eligibility criteria as laid down in Basel III. The Basel III capital regulations continue to be based on three-mutually reinforcing Pillars, viz. Minimum Capital Requirements (Pillar 1), Supervisory Review of Capital Adequacy (Pillar 2) and Market Discipline (Pillar 3) of the Basel II Capital Adequacy framework.

The Basel-III norms mainly seek to:

- Raise the quality of capital to ensure that the banks are capable to absorb losses on both as going concern and as gone concern basis.
- Increase the risk coverage of the capital framework.
- Introduce leverage ratio to serve as a backstop to the risk-based capital measure.
- Raise the standards for the supervisory review process and public disclosures etc.

The macro prudential aspects of Basel III are largely enshrined in the capital buffers. Both the buffers i.e. the capital conservation buffer and the countercyclical buffer are intended to protect the banking sector from stressed situations and business cycles.

Minimum capital requirements under Basel-III:

Under the Basel III Capital Regulations, banks are required to maintain a minimum Pillar 1 Capital (Tier-I + Tier-II) to Risk-weighted Assets Ratio (CRAR) of 9% on an on-going basis. Besides these minimum capital requirements, Basel III also provides for creation of capital conservation buffer (CCB) and countercyclical capital buffer (CCCB). At present, RBI mandates for CCB @ 2.5% of Risk Weighted Assets to be maintained at 0.625% every year starting March 2016. Accordingly, the total regulatory capital funds under Basel- III norms will consist of the sum of the following categories and banks are required to maintain 11.5% of Risk Weighted Assets (9% + 2.5%) by March 2019.

Transitional Arrangements as per the RBI norms:-

Capital Ratios	(% to RWAs)			
	31.03.2016	31.03.2017	31.03.2018	31.03.2019
Minimum Common Equity Tier I (CET-1)	5.50	5.50	5.50	5.50
Capital Conservation Buffer	0.625	1.250	1.875	2.50
Minimum CET1 + CCB	6.125	6.75	7.375	8.00
Minimum Tier 1 Capital (excluding CCB)	7.00	7.00	7.00	7.00
Tier-2 Maximum allowed	2.00	2.00	2.00	2.00
Minimum Total Capital	9.00	9.00	9.00	9.00
Minimum Total Capital + CCB	9.625	10.250	10.875	11.50

B. The Bank's approach in assessment of capital adequacy

The Bank is following standardized approach, Standardized Duration approach and Basic Indicator approach for measurement of capital charge in respect of credit risk, market risk and operational risk respectively. Besides computing CRAR under the Pillar I requirement, the Bank also undertakes stress testing periodically in various risk areas to assess the impact of stressed scenario or plausible events on asset quality, liquidity, profitability and capital adequacy. The bank conducts Internal Capital Adequacy Assessment Process (ICAAP) on an annual basis to assess the sufficiency of its capital funds to cover the risks specified under Pillar – I and Pillar-II of Basel guidelines. The adequacy of Bank's capital funds to meet the future business growth is being assessed in the ICAAP document.

C. Quantitative Disclosures:

Rs in Crore

a)	Capital requirements for Credit Risk: (@ 9.00% on Risk weighted Assets)		
	• Portfolios subject to standardised approach		2194.39
	• Securitisation exposures		Nil
b)	Capital requirements for Market Risk:		
	• Standardised duration approach		46.96
	○ Interest Rate Risk	14.76	
	○ Equity risk	30.20	
	○ Foreign exchange risk	2.00	
c)	Capital requirements for Operational Risk:		
	• Basic indicator approach		242.98
	Minimum capital required (a+b+c)		2484.33
d)	Capital Conservation Buffer (CCB) at 1.875%		525.12
	Minimum Total Capital + CCB		3009.45
e)	Total Capital Funds available		4232.82
	Total Risk Weighted Assets		28006.25
	Common Equity Tier I CRAR % (excluding CCB)		12.825%
	Capital Conservation Buffer %		1.875%
	Tier I CRAR %		14.700%
	Tier II CRAR %		0.41%
	Total CRAR %		15.11%

2. Risk Exposure and Assessment

Risk is an integral part of banking business in an ever dynamic environment, which is undergoing radical changes both on the technology front and product offerings. The main risks faced by the bank are credit risk, market risk and operational risk. The bank aims to achieve an optimum balance between risk and return to maximize shareholder value. The relevant information on the various categories of risks faced by the bank is given in the ensuing sections. This information is intended to give market participants a better idea on the risk profile and risk management practices of the bank.

The Bank has a comprehensive risk management system in order to address various risks and has set up an Integrated Risk Management Department (RMD), which is independent of operational departments. Bank has a Risk Management Committee of Board functioning at apex level for formulating, implementing and reviewing bank's risk management measures pertaining to credit, market and operational risks. Apart from the Risk Management Committee of the Board at apex level, the Bank has a strong bank-wide risk management structure comprising of Risk Management Committee of Executives (RMCE) assisted by Asset Liability Management Committee (ALCO), Credit Risk Management Committee (CRMC) and Operational Risk Management Committee (ORMC) at senior management level. Credit Risk Management Committee deals with credit policies and procedures, Asset Liability Management Committee deals with Asset Liability Management (ALM) and Investment Policy of the Bank and Operational Risk Management Committee formulates policies and procedures for managing operational risks.

The Bank has formulated the required policies such as Integrated Risk Management Policy, Loan Policy, Credit Risk Management Policy, ALM Policy, Integrated Treasury Policy, Inspection and Audit policies, KYC policy, Risk Based Internal Audit Policy, Stress Testing Policy, Disclosure Policy, ICAAP policy and Credit Risk Mitigation & Collateral Management Policy, Risk Rating and Pricing policy, etc for mitigating the risk in various areas and monitoring the same.

The structure and organization of Risk Management functions of the bank is as follows:

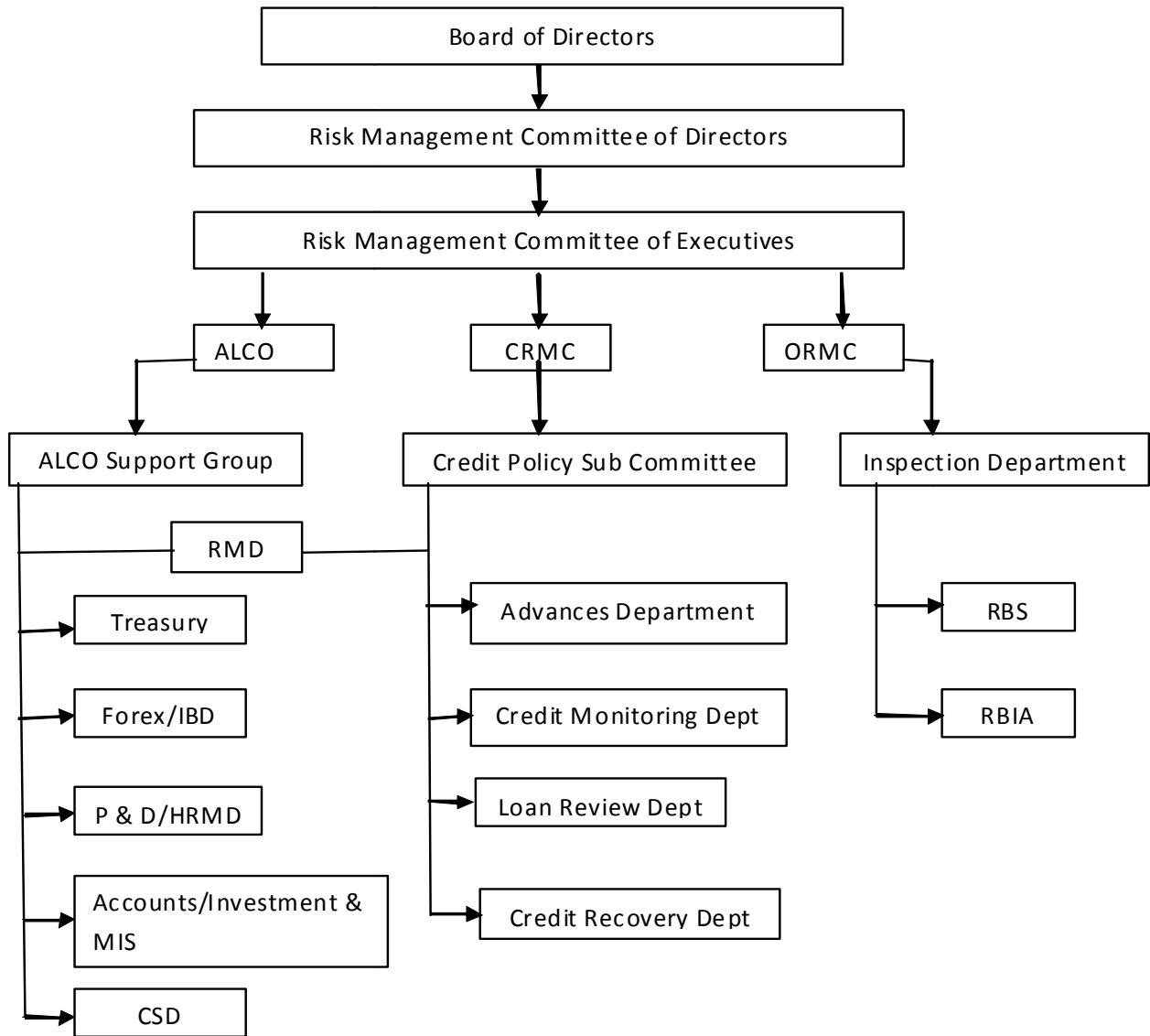


TABLE DF – 3
Credit Risk: General Disclosures

Credit Risk:

Credit Risk is a possibility of losses associated with diminution in the credit quality of borrowers or counterparties. In a bank's portfolio, Credit Risk arises mostly from lending activities of the bank, when a borrower is unable to meet its financial obligations emanating from potential changes in the credit quality / worthiness of the borrowers or counterparties.

Credit Risk Management encompasses a host of management techniques, which help the banks in mitigating the adverse impacts of credit risk. The objective of the Credit Risk Management is to identify, measure, monitor and control credit risk by adopting suitable methodology.

The Bank has formulated Loan Policy which stipulates various prudential norms, bench marks, guidelines for sanctioning of credits and recovery of the same. The Bank has also formulated a separate Credit Risk Management Policy, besides a Policy on Credit Risk Mitigation and Collateral Management.

Credit Risk is assessed by a robust internal credit risk rating system. Credit Risk Rating is the process wherein the merits and demerits of a borrower are captured and assigned with scorings, which enables the Bank to take a view on the acceptability or otherwise of any credit proposal.

Credit Risk Management Policy:

The Bank has put in place a well-structured Credit Risk Management Policy duly approved by the Board. The Policy document defines organization structure, roles and responsibilities and the processes whereby the Credit Risks carried by the Bank can be identified, quantified and managed. Credit Risk is monitored on a bank wide basis and the compliance with regard to the risk limits approved by the Credit Risk Management Committee (CRMC)/ Board is ensured.

The Bank adopts the definition of 'past due' and 'impaired credits' (for reporting purposes) as defined by Reserve Bank of India under Income Recognition, Asset Classification and provisioning (IRAC) norms (vide RBI Master Circular dated July 01, 2015).

Quantitative Disclosures

Total Gross Credit Risk Exposures including Geographic Distribution of Exposure:

	Rs. in crore		
Exposure as on 30.09.2018	Domestic	Overseas	Total
Fund based	32297.57	--	32297.57
Non-fund based	2424.02	--	2424.02
Investment (Non SLR)	354.69	--	354.69
Total	35076.28	--	35076.28

Industry type distribution of exposures – 30.09.2018

Rs. in crore

INDUSTRY /ACTIVITY	FUNDED EXPOSURE	NON-FUNDED EXPOSURE	INVESTMENT EXPOSURE (NON SLR)	TOTAL EXPOSURE
Mining and Quarrying	54.94	2.98	0.53	58.45
Iron and Steel	1212.97	234.33	0.33	1447.63
Other Metal and Metal Products	506.91	89.50	0.00	596.41
Engineering of which Electronics	155.84	73.07	0.00	228.91
Others (incl Electrical & Home Appliances)	494.44	151.58	0.00	646.02
Cotton Textiles	1535.54	100.67	0.00	1636.21
Other textiles	1830.86	113.43	0.00	1944.29
Food Processing	170.56	25.25	0.00	195.81
Beverages and Tobacco	40.98	5.30	0.00	46.28
Leather and Leather products	18.69	0.97	0.00	19.66
Wood and Wood Products	103.52	81.48	0.00	185.00
Paper and Paper Products	739.54	53.57	0.00	793.11
Petroleum, Coal Products and Nuclear Fuels	49.41	4.14	0.00	53.55
Drugs and Pharmaceuticals	62.64	21.06	0.33	84.03
Chemicals and Chemical Products (Dyes, Paints, etc.)	326.93	141.73	0.00	468.66
Rubber, Plastic and their Products	310.83	50.52	0.00	361.35
Glass & Glassware	18.87	0.09	0.00	18.96
Cement and Cement Products	21.56	1.01	0.00	22.57
Vehicles, Vehicle Parts and Transport Equipments	241.08	48.70	0.00	289.78
Gems and Jewellery	100.90	19.96	0.00	120.86
Construction	1273.15	20.40	0.00	1293.55
Infrastructure	197.94	19.89	0.10	217.93
Other Industries	92.36	4.87	0.00	97.23
All Industries Total	9560.46	1264.50	1.29	10826.25
Residuary other advances	22737.11	1159.52	353.40	24250.03
Total Gross Exposure	32297.57	2424.02	354.69	35076.28

Note: The exposure to Other Textiles industry accounted for 5.54% of Total Gross Exposure as of 30.09.2018. The coverage of advances to the above industry occupies the top position among the total industry sectors.

Residual contractual maturity breakdown of assets 30.09.2018
(computed as per the guidelines of RBI on Asset Liability Management)

Rs in Crore

PERIOD	Cash, RBI Balance and Balance with all Banks	Advances (Net)	Investments (Net)	Fixed & Other Assets	Total
1 Day	400.46	110.66	1762.19	51.45	2324.76
2 to 7 Days	0.00	1126.58	362.18	103.42	1592.18
8 to 14 Days	0.00	1831.97	757.70	113.91	2703.58
15 to 30 Days	152.61	504.39	743.99	16.47	1417.46
31 days to 60 days	372.13	432.85	758.49	9.09	1572.56
61 days to 90 days	85.12	669.10	414.96	9.14	1178.32
Over 3 Months & upto 6 Months	386.76	1275.43	825.35	170.55	2658.09
Over 6 Months & upto 1 Year	521.38	3502.26	476.51	222.63	4722.78
Over 1 Year & upto 3 Years	375.15	15099.46	1509.02	225.84	17209.47
Over 3 Years & upto 5 Years	15.75	2412.74	53.64	235.38	2717.51
Over 5 Years	33.76	2459.66	358.08	582.38	3433.88
Total	2343.12	29425.10	8022.11	1740.26	41530.59

Amount of NPAs (Gross) Rs in crore

Sub-standard	399.96
Doubtful 1	172.06
Doubtful 2	226.44
Doubtful 3	34.51
Loss	14.91
Gross NPA Total	847.88

Geographical Area-wise NPAs: Rs in crore

Gross NPA – Domestic	847.88
Gross NPA – overseas	Nil
Gross NPA – Total	847.88

The Amount of Net NPAs is Rs. 497.78 crore

The NPA ratios are as under

- Gross NPA to Gross Advances - 2.85%
- Net NPA to Net Advances - 1.69%

Major Industry-wise NPA as on 30.09.2018 Rs in Crore

Industry	Gross NPA	Provision held
Other Textiles	31.61	10.12

The movement of NPA is as under:

	Rs in crore
i. Opening balance at the beginning of the Half Year (01.04.2018)	856.55
ii. Additions made during the Half Year	262.01
iii. Reductions during the Half Year	270.68
iv. Closing balance at the end of the Half Year (30.09.2018) (i + ii - iii)	847.88

The movements of provisions for NPAs are as under:

Nature	Rs in crore		
	Floating Provision	Specific Provision	Total Provision
i. Opening balance at the beginning of the half year(01.04.2018)	18.65	358.53	377.18
ii. Provisions made during the half year	---	112.00	112.00
iii. Write-off/Write-back of excess provisions during the half year	---	144.08	144.08
iv. Closing Balance at the end of half year (30.09.18) (i + ii - iii)	18.65	326.45	345.10

Recovery made during the half year ended 30.09.2018 which is directly taken to Income Account amounts to Rs. 33.13 crore (include Q1 – Rs.15.55 lakh & Q2 – Rs. 17.58 lakh)

The amount of non-performing investment - Nil

The amount of provision held for non-performing investment is Nil

The movement of provisions for depreciation on investments

	Rs in crore
i. Opening balance at the beginning of the half year (01.04.2018)	135.87
ii. Provisions made during the half year	16.00
iii. Write-off during the half year	0.00
iv. Write-back of excess provisions during the half year	0.00
v. Closing Balance at the end of the half year (30.09.18) (i + ii – iii – iv)	151.87

TABLE - DF - 4

CREDIT RISK: DISCLOSURES FOR PORTFOLIO SUBJECT TO THE STANDARDISED APPROACH

Qualitative Disclosures

The Bank is using the services of the External Credit Rating Agencies approved by Reserve Bank of India, namely a) CRISIL, b) ICRA, c) CARE, d) FITCH India, e) Brickwork, f) SMERA ratings and g) Infomerics Valuation and Rating Pvt Ltd to facilitate the corporate borrower customers who enjoy credit facilities above Rs.5.00 crore to solicit the ratings. The corporates which are yet to get the approved ratings from these rating agencies are treated as 'unrated'.

The Bank computes risk weight on the basis of external rating assigned, both Long Term and Short Term, for the facilities availed by the borrower. The external ratings assigned are generally facility specific. The Bank follows the below mentioned procedures as laid down in the Basel III guidelines for usage of external ratings:

- Rating assigned by one rating agency is used for all the types of claims on the borrowing entity.
- Long term ratings are used for facilities with contractual maturity of one year & above.
- Short term ratings are generally applied for facilities with contractual maturity of less than one year.

Quantitative Disclosures

The exposures after risk mitigation as per standardised approach, (rated and unrated) in the following three major risk buckets, as well as, those that are deducted as per risk mitigation are given below.

Risk Weight	Rs. in crore		
	Rated	Unrated	Total
Below 100 %	330.49	21707.42	22037.91
At 100 %	549.31	11959.97	12509.28
More than 100 %	1050.04	1535.28	2585.31
Total outstanding after mitigation	1929.83	35202.67	37132.50
Deducted (as per Risk Mitigation)	3.17	4582.60	4585.77

TABLE DF – 5

CREDIT RISK MITIGATION: DISCLOSURES FOR STANDARDISED APPROACHES

Qualitative Disclosures

The Bank has put in place Credit Risk Mitigation and Collateral Management Policy with the primary objective of

- Mitigation of Credit Risks and enhancing awareness on identification of appropriate collateral taking into account the spirit of Basel III / RBI guidelines
- Optimizing the benefit of Credit Risk Mitigation in computation of capital charge as per the approaches laid down in Basel III / RBI guidelines.

Valuation and methodologies are detailed in Credit Risk Management Policy, Valuation Policy and Loan Policy of the Bank.

The Bank recognises the following Financial Collateral (FC) for Credit Risk Mitigation.

- a) Cash or Cash equivalent (Bank Deposits/Certificate of Deposits issued by the Bank, etc.)
- b) Gold Jewels
- c) Indira Vikas Patras
- d) Kisan Vikas Patras
- e) National Savings Certificates
- f) Life Insurance Policies with a declared surrender value
- g) Securities issued by the Central and State Governments
- h) Debt securities rated by a recognized Credit Rating Agency where these are either:
 - at least BBB(-) when issued by public sector entities; or
 - at least A when issued by other entities (including banks and Primary Dealers); or
 - at least PR3/P3/F3/A3 for short term debt instruments
- i) Debt securities not rated by Credit Rating Agency but
 - issued by a bank and
 - listed on a recognized stock exchange; and
 - Classified as senior debt.

The Bank accepts guarantees from individuals with considerable net worth and the Corporates, besides guarantee issued by Government, other Commercial banks, ECGC and CGTSI.

Concentration Risk in Credit Risk Mitigation: All types of securities eligible for mitigation are easily realizable financial securities. As such, presently no limit/ceiling has been prescribed to address the concentration risk in credit risk mitigants recognized by the Bank. The portion of advances subjected to CRM including non-funded advances amounted to 13.26% of outstanding total of funded and non-funded credit. The Bank has ensured legal certainty in the matter of credit risk mitigation as per RBI guidelines.

Quantitative Disclosures

a. For each separately disclosed credit risk portfolio, the total exposure (after, where applicable, on-or off balance sheet netting) that is covered by eligible financial collateral (FCs) after the application of haircuts is given below:		
Portfolio category	Financial collateral	Quantum of exposure covered Rs in crore
1. Funded - Credit	Bank's own deposits	933.63
2. Funded - Credit	Gold jewels	2666.33
3. Funded - Credit	LIC/KVP/NSC	3.50
4. Non Funded	Bank's own deposits	594.36

b. For each separately disclosed portfolio, the total exposure (after, on balance sheet netting) that is covered by Guarantees:		
Portfolio category	Guaranteed by	Quantum of exposure covered Rs in crore
1. Funded - Credit	Central Government	149.17
2. Funded - Credit	ECGC	150.00
3. Funded – Credit	CGTSI	30.04

TABLE DF - 6
Securitization: Disclosure for Standardised Approach

Qualitative Disclosures:

The Bank has not undertaken any securitization activity.

Quantitative Disclosures: NIL

TABLE DF – 7

Market Risk in Trading Book

Qualitative Disclosures:

Market Risk in trading book is assessed as per the Standardised duration method. The capital charge for both investments and foreign exchange exposure is computed as per Reserve Bank of India prudential guidelines.

a. Definition of market risk: - Market risk refers to the potential losses arising from volatility in interest rates, foreign exchange rates, equity prices and commodity prices. Market risk arises with respect to all market risk sensitive financial instruments, including securities, foreign exchange contracts, equity and derivative instruments as well as from balance sheet or structural positions.

b. Portfolios covered under standardized approach: - The bank's portfolio comprises of Government securities, equity shares and forex portfolio.

c. Strategies and processes

1) The Bank has put in place a comprehensive Market risk management Framework to address the Market risks (bank wide) including that of the Trading Book.

2) Within the above framework, various policies of the Bank prescribes Limits like Value at Risk (VaR), Duration, Minimum holding level for liquid assets, Exposure limits, Forex open position limits (day light/overnight), Stop-loss limits etc .

3) Risk profiles are analyzed and the effectiveness of risk mitigants is regularly monitored through Mid Office.

4) Adherence to limits are being monitored by dedicated mid office, reporting exceptions to the head of Risk Management Department, independent of Treasury /IBD operational units.

d. Risk Measurement

- 1) Value at Risk (VaR) numbers are arrived for Trading book Central Government securities and Foreign Exchange Position.
- 2) The positions are marked to market at stipulated intervals. The Duration/Modified Duration for trading book is computed and its adherence to the prescribed duration limits is ensured.
- 3) The Bank is computing capital charge for both investments and foreign exchange exposure categories using Standardized Duration Approach as required under RBI guidelines.
- 4) Stress testing analysis is done by applying rate shocks on investment portfolio and also on foreign exchange open position.

Quantitative Disclosures:

The capital requirements for 30.09.2018

• Interest Rate Risk	-	Rs. 14.76 crore
• Equity Position Risk	-	Rs. 30.20 crore
• Foreign Exchange Risk	-	Rs. 2.00 crore
Total	-	Rs. 46.96 crore

TABLE DF – 8 **OPERATIONAL RISK**

Qualitative Disclosures

Operational Risk is the risk of loss resulting from inadequate or failed processes, people and systems or from external events. Operational risk includes legal risk but excludes strategic and reputation risks.

The Bank has put in place Operational Risk Management Policy duly approved by the Board. This policy outlines the Organisation Structure and covers the process of identification, assessment/measurement and control of various operational risks.

The other policies adopted by the Bank which deal with the management of operational risks are Inspection Policy, Information Security Audit Policy and Policy on Modified code of conduct for Know-Your Customer & Anti-Money Laundering Standards.

Operational Risks in the Bank are managed through comprehensive and well-articulated internal control framework. Operational risk is mitigated by effecting suitable insurance coverage wherever necessary. The Bank has also put in place a compliance cell to supervise KYC & AML guidelines and off site monitoring of high value transactions. For accounting operations in the computerized environment, suitable internal control system is maintained and a separate policy on I.T. Security is in place specifying the internal guidelines on access, control, communications, operations, personal security, business continuity management etc.

Quantitative Disclosures:

Capital charge for Operational Risk is computed as per the Basic Indicator Approach based on the average of the gross income for the previous three years i.e. 2015-16, 2016-17 and 2017-18 as defined in the Master Circular – Basel III Capital Regulations & New Capital Adequacy Framework guidelines. The required capital is Rs.242.98 crore.

TABLE DF – 9 **INTEREST RATE RISK IN THE BANKING BOOK (IRRBB)**

Qualitative Disclosures:

Interest rate risk is the risk where changes in the market interest rates might affect a bank's financial condition. Changes in interest rates affect both the current earnings (earnings perspective) as also the net-worth of the Bank (economic value perspective). The risk from earnings perspective can be measured as impact in the Net Interest Income (NII) or Net Interest Margin (NIM). Similarly, the risk from economic value perspective can be measured as drop in the Economic value of Equity (EVE).

The impact on income (earning perspective) is measured through use of Gap Analysis by applying notional rate shock up to 200 bps as prescribed.

For the calculation of impact on earnings, the Traditional Gap is taken from the Rate Sensitivity statement and based on the remaining period from the mid point of a particular bucket, the impact for change in interest rates up to 200 bps is arrived at for one year time horizon.

The Bank has adopted Duration Gap Analysis for assessing the impact (as a percentage) on the Economic Value of Equity (Economic Value Perspective) by applying a notional interest rate shock of 200 bps. RBI has issued draft guidelines vide DBOD.No. BP. 7/21.04.098/ 2005-06 dated April 17, 2006 on improvements to banks' Asset Liability Management framework, covering interest rate risk and liquidity risk measurement / reporting frameworks and prudential limits. Subsequently, on November 04, 2010, RBI issued a circular on Interest Rate Risk using Duration Gap Analysis and these guidelines have been taken into account while calculating IRRBB. The Bank calculates Modified Duration Gap on Assets & Liabilities and arrive at the impact on Economic Value of Equity. The Bank is calculating IRRBB on a monthly basis.

Quantitative Disclosures:

- a) The impact of change in Interest Rate i.e. Earnings at Risk for 200 bps interest rate shock as on 30.09.2018 is Rs.87.81 crore.
- b) The impact of change in market value of Equity for an interest rate shock of 200 bps as on 30.09.2018 is 9.20%.

TABLE DF – 10
General disclosures for exposures related to counterparty credit risk

Counterparty Credit Risk (CCR) is the risk that a counter party to a transaction could default before the final settlement of the transaction cash flows. Unlike a firm's exposure to credit risk through a loan, where the exposure to credit risk is unilateral and only the lending bank faces the risk of loss, CCR creates a bilateral risk of loss to either parties.

Counterparty credit risk in case of derivative contracts arises from the forward contracts. The subsequent credit risk exposures depend on the value of underlying market factors (e.g., interest rates and foreign exchange rates), which can be volatile and uncertain in nature. The Bank does not enter into derivative transactions other than forward contracts.

Credit exposures on forward contracts

The Bank enters into the forward contracts in the normal course of business for proprietary trading and arbitrage purposes, as well as for our own risk management needs, including mitigation of interest rate and foreign currency risk. Derivative exposures are calculated according to the current exposures method.

Counterparty Credit exposure as on September 30, 2018

Rs in crore

Nature	Notional Amount	Potential Exposure @2% & @10%	Current exposure	Total credit exposure
Forward contracts	3433.06	98.76	60.44	159.20

The capital requirement for Bank's exposure to Qualified Central Counter Party (QCCP) has been computed with respect to the trading exposure to Clearing Corporation of India (CCIL) as of 30.09.2018 amounting to Rs.43.10 crore with risk weighted assets of Rs. 8.62 crore, which is forming part of credit risk total. In terms of RBI circular dated 28.03.2013, the Credit Valuation Adjustment (CVA) risk capital charge has been computed, which amounted to Rs. 0.63 crore (the corresponding risk weighted value of Rs.7.90 crore has also been added to credit risk weighted assets).

3. Composition of Capital Disclosure

TABLE DF – 11
Composition of Capital

(Rs. in million)			
Basel III common disclosure template - September 30, 2018			Ref No.
Common Equity Tier 1 capital: instruments and reserves			
1	Directly issued qualifying common share capital plus related stock surplus (share premium)	9099.15	-
2	Retained earnings	32290.34	-
3	Accumulated other comprehensive income (and other reserves)	-	-
4	Directly issued capital subject to phase out from CET1 (only applicable to non-joint stock companies)	-	-
	Public sector capital injections grandfathered until January 1, 2018	-	-
5	Common share capital issued by subsidiaries and held by third parties (amount allowed in group CET1)	-	-
6	Common Equity Tier 1 capital before regulatory adjustments	41389.49	-
Common Equity Tier 1 capital : regulatory adjustments			
7	Prudential valuation adjustments	-	-
8	Goodwill (net of related tax liability)	-	-
9	Intangibles other than mortgage-servicing rights (net of related tax liability)	196.65	-
10	Deferred tax assets	-	-
11	Cash-flow hedge reserve	-	-
12	Shortfall of provisions to expected losses	-	-
13	Securitisation gain on sale	-	-
14	Gains and losses due to changes in own credit risk on fair valued liabilities	-	-
15	Defined-benefit pension fund net assets	-	-
16	Investments in own shares (if not already netted off paid-up capital on reported balance sheet)	-	-
17	Reciprocal cross-holdings in common equity	0.43	-
18	Investments in the capital of banking, financial and insurance entities that are outside the scope of regulatory consolidation, net of eligible short positions, where the bank does not own more than 10% of the issued share capital (amount above 10% threshold)	-	-
19	Significant investments in the common stock of banking, financial and insurance entities that are outside the scope of regulatory consolidation, net of eligible short positions (amount above 10% threshold)	-	-
20	Mortgage servicing rights (amount above 10% threshold)	-	-
21	Deferred tax assets arising from temporary differences (amount above 10% threshold, net of related tax liability)	-	-

22	Amount exceeding the 15% threshold	-	-
23	of which : significant investments in the common stock of financial entities	-	-
24	of which : mortgage servicing rights	-	-
25	of which : deferred tax assets arising from temporary differences	-	-
26	National specific regulatory adjustments(26a+26b+26c+26d)	-	-
26a	of which :Investments in the equity capital of unconsolidated insurance subsidiaries	-	-
26b	of which : Investments in the equity capital of unconsolidated non-financial subsidiaries	-	-
26c	of which : Shortfall in the equity capital of majority owned financial entities which have not been consolidated with the bank	-	-
26d	of which : Unamortised pension funds expenditures	-	-
27	Regulatory adjustments applied to Common Equity Tier 1 due to insufficient Additional Tier 1 and Tier 2 to cover deductions	-	-
28	Total regulatory adjustments to Common equity Tier 1	197.08	-
29	Common Equity Tier 1 capital (CET1)	41192.41	-
Additional Tier 1 capital : instruments			
30	Directly issued qualifying Additional Tier 1 instruments plus related stock surplus (share premium) (31+32)	-	-
31	of which : classified as equity under applicable accounting standards (Perpetual Non-Cumulative Preference Shares)	-	-
32	of which : classified as liabilities under applicable accounting standards (Perpetual debt Instruments)	-	-
33	Directly issued capital instruments subject to phase out from Additional Tier 1	-	-
34	Additional Tier 1 instruments (and CET1 instruments not included in row 5) issued by subsidiaries and held by third parties (amount allowed in group AT1)	-	-
35	of which : instruments issued by subsidiaries subject to phase out	-	-
36	Additional Tier 1 capital before regulatory adjustments		
Additional Tier 1 capital: regulatory adjustments			
37	Investments in own Additional Tier 1 instruments	-	-
38	Reciprocal cross-holdings in Additional Tier 1 instruments	-	-
39	Investments in the capital of banking, financial and insurance entities that are outside the scope of regulatory consolidation, net of eligible short positions, where the bank does not own more than 10% of the issued common share capital of the entity (amount above 10% threshold)	-	-
40	Significant investments in the capital of banking, financial and insurance entities that are outside the scope of regulatory consolidation (net of eligible short positions)	-	-
41	National specific regulatory adjustments (41a+41b)	-	-
41a	Investments in the Additional Tier 1 capital of unconsolidated insurance subsidiaries	-	-
41b	Shortfall in the Additional Tier 1 capital of majority owned financial entities which have not been consolidated with the bank	-	-
		-	-
		-	-

		-	-
		-	-
42	Regulatory adjustments applied to Additional Tier 1 due to insufficient Tier 2 to cover deductions	-	-
43	Total regulatory adjustments to Additional Tier 1 capital	-	-
44	Additional Tier 1 capital (AT1)	-	-
44a	Additional Tier 1 capital reckoned for capital adequacy	-	-
45	Tier 1 capital (T1 = CET1 + Admissible AT1) (29 + 44a)	41192.41	-
Tier 2 capital : instruments and provisions			-
46	Directly issued qualifying Tier 2 instruments plus related stock surplus	nil	-
47	Directly issued capital instruments subject to phase out from Tier 2	nil	-
48	Tier 2 instruments (and CET1 and AT1 instruments not included in rows 5 or 34) issued by subsidiaries and held by third parties (amount allowed in group Tier 2)	-	-
49	of which : instruments issued by subsidiaries subject to phase out	-	-
50	Provisions include the following		
	a) Investment Reserve Rs. 23.80 mn	1135.84	-
	b) Provision for Standard Asset Rs. 1085.80 mn		
	c) Provision for Unhedged Exposure Rs. 26.24 mn		
51	Tier 2 capital before regulatory adjustments	1135.84	-
Tier 2 capital: regulatory adjustments			
52	Investments in own Tier 2 instruments		-
53	Reciprocal cross-holdings in Tier 2 instruments	0.00	-
54	Investments in the capital of banking, financial and insurance entities that are outside the scope of regulatory consolidation, net of eligible short positions, where the bank does not own more than 10% of the issued common share capital of the entity (amount above the 10% threshold)	-	-
55	Significant investments in the capital banking, financial and insurance entities that are outside the scope of regulatory consolidation (net of eligible short positions)	-	-
56	National specific regulatory adjustments (56a+56b)	-	-
56a	of which : Investments in the Tier 2 capital of unconsolidated insurance subsidiaries	-	-
56b	of which : Shortfall in the Tier 2 capital of majority owned financial entities which have not been consolidated with the bank	-	-
57	Total regulatory adjustments to Tier 2 capital	0.00	-
58	Tier 2 capital (T2)	1135.84	-
58a	Tier 2 capital reckoned for capital adequacy	1135.84	-
58b	Excess Additional Tier 1 capital reckoned as Tier 2 capital	-	-
58c	Total Tier 2 capital admissible for capital adequacy (58a + 58b)	1135.84	-
59	Total capital (TC = T1 + Admissible T2) (45 + 58c)	42328.25	-
60	Total risk weighted assets (60a + 60b + 60c)	280062.53	-
60a	of which : total credit risk weighted assets	243820.78	-
60b	of which : total market risk weighted assets	5869.42	-
60c	of which : total operational risk weighted assets	30372.33	-

Capital ratios			
61	Common Equity Tier 1 (as a percentage of risk weighted assets)	14.71%	-
62	Tier 1 (as a percentage of risk weighted assets)	14.71%	-
63	Total capital (as a percentage of risk weighted assets)	15.11%	-
64	Institution specific buffer requirement (minimum CET1 requirement plus capital conservation and countercyclical buffer requirements, expressed as a percentage of risk weighted assets)	7.375%	-
65	of which : capital conservation buffer requirement	1.875%	-
66	of which : bank specific countercyclical buffer requirement	-	-
67	of which : G-SIB buffer requirement	-	-
68	Common Equity Tier 1 available to meet buffers (as a percentage of risk weighted assets)	14.71%	-
National minima (if different from Basel III)			
69	National Common Equity Tier 1 minimum ratio (if different from Basel III minimum)	5.50%	-
70	National Tier 1 minimum ratio (if different from Basel III minimum)	7.00%	-
71	National total capital minimum ratio (if different from Basel III minimum) (including CCB upto 31.12.2018)	10.875%	-
Amounts below the thresholds for deduction (before risk weighting)			
72	Non-significant investments in the capital of other financial entities	-	-
73	Significant investments in the common stock of financial entities	-	-
74	Mortgage servicing rights (net of related tax liability)	-	-
75	Deferred tax assets arising from temporary differences (net of related tax liability)	-	-
Applicable caps on the inclusion of provisions in Tier 2			
76	Provisions eligible for inclusion in Tier 2 in respect of exposures subject to standardised approach (prior to application of cap)	-	-
77	Cap on inclusion of provisions in Tier 2 under standardised approach	-	-
78	Provisions eligible for inclusion in Tier 2 in respect of exposures subject to internal ratings-based approach (prior to application of cap)	-	-
79	Cap for inclusion of provisions in Tier 2 under internal ratings-based approach	-	-
Capital instruments subject to phase-out arrangements (only applicable between March 31, 2018 and March 31, 2022)			
80	Current cap on CET1 instruments subject to phase out arrangements	NA	-
81	Amount excluded from CET1 due to cap (excess over cap after redemptions and maturities)	-	-
82	Current cap on AT1 instruments subject to phase out arrangements	-	-
83	Amount excluded from AT1 due to cap (excess over cap after redemptions and maturities)	-	-
84	Current cap on T2 instruments subject to phase out arrangements	-	-
85	Amount excluded from T2 due to cap (excess over cap after redemptions and maturities)	-	-

Notes to the template		
Row No. of the template	Particular	(Rs.in million)
10	Deferred tax assets associated with accumulated losses	-
	Deferred tax assets (excluding those associated with accumulated losses) net of Deferred tax liability	-
	Total as indicated in row 10	-
19	If investments in insurance subsidiaries are not deducted fully from capital and instead considered under 10% threshold for deduction, the resultant increase in the capital of bank	-
	of which : Increase in Common Equity Tier 1 capital	-
	of which : Increase in Additional Tier 1 capital	-
	of which : Increase in Tier 2 capital	-
26b	If investments in the equity capital of unconsolidated non-financial subsidiaries are not deducted and hence, risk weighted then :	-
	(i) Increase in Common Equity Tier 1 capital	-
	(ii) Increase in risk weighted assets	-
44a	Excess Additional Tier 1 capital not reckoned for capital adequacy (difference between Additional Tier 1 capital as reported in row 44 and admissible Additional Tier 1 capital as reported in 44a)	-
	of which : Excess Additional Tier 1 capital which is considered as Tier 2 capital under row 58b	-
50	Eligible Provisions included in Tier 2 capital	1135.84
	Eligible Revaluation Reserves included in Tier 2 capital	---
	Total of row 50	1135.84
58a	Excess Tier 2 capital not reckoned for capital adequacy (difference between Tier 2 capital as reported in row 58 and T2 as reported in 58a)	-

**Table DF-12:
Composition of Capital- Reconciliation Requirements**

Step 1

		(Rs. In million)	
		Balance sheet as in financial statements	Balance sheet under regulatory scope of consolidation
		As on 30.09.2018	As on 30.09.2018
A	Capital & Liabilities		▲
i.	Paid-up Capital	731.89	
	Reserves & Surplus	43977.78	
	Minority Interest		
	Total Capital	44709.67	
ii.	Deposits	345340.06	
	of which : Deposits from banks	303.03	
	of which : Customer deposits	345037.03	
	of which : Other deposits (pl. specify)		
iii.	Borrowings	10263.35	
	of which : From RBI (REPO)	4950.00	
	of which : From banks	0.00	
	of which : From other institutions & agencies	5313.35	
	of which : Others (pl. specify) Outside India	0.00	
	of which : Capital instruments	0.00	
iv.	Other liabilities & provisions	14992.80	
	Total	415305.88	
B	Assets		
i.	Cash and balances with Reserve Bank of India	16886.67	Not Applicable
	Balance with banks and money at call and short notice	6544.58	
ii.	Investments :	80221.10	
	of which : Government securities	78188.70	
	of which : Other approved securities		
	of which : Shares	94.06	
	of which : Debentures & Bonds	128.46	
	of which : Subsidiaries / Joint Ventures / Associates		
	of which : Others (Commercial Papers, Mutual Funds etc.)	1809.88	
iii.	Loans and advances	294250.95	
	of which : Loans and advances to banks	0.00	
	of which : Loans and advances to customers	294250.95	
iv.	Fixed assets	2272.34	
v.	Other assets	15130.24	
	of which : Goodwill and intangible assets		
	of which : Deferred tax assets	400.13	
vi.	Goodwill on consolidation		
vii.	Debit balance in Profit & Loss account		
	Total Assets	415305.88	▼

Step 2

- 1) As the Bank is not having any subsidiary, no disclosure relating any legal entity for regulatory consolidation is made.
- 2) The entire paid up capital of the Bank amounting to Rs.731.89 million is included in CET I. (refer Item I of DF-11)
- 3) The break up for Reserves & Surplus Rs.43977.78 mn as shown in the Bank's financial statements is given hereunder for the purpose of reconciliation for calculation of Regulatory Capital in DF-11.

Rs.in Million

As per Balance Sheet	Amount	As shown in DF-11 Capital
a) Statutory reserves	10860.00	Included in Regulatory CET I capital DF-11 (S.No.2)
b) Capital Reserves	1195.27	Included in Regulatory CET I capital DF-11 (S.No.2)
c) Share Premium	8367.26	Included in Regulatory CET I capital DF-11 (S.No.1)
d) General reserves	17265.00	Included in Regulatory CET I capital DF-11 (S.No.2)
e) Investment reserve	23.80	Included in Regulatory Tier II capital DF-11(S.No.50)
f) Special Reserve under IT	2860.00	Included in Regulatory CET I Capital -DF11- S.No. 2)
g) Balance in P&L	110.07	Included in Regulatory CET I capital DF-11 (S.No.2)
h) Profit additions in P & L	3296.38	Excluded in CET I capital DF-11(S.No.2), as quarterly profit not reckoned as per extant guidelines
Total	43977.78	

- 4) Other Liabilities - The following subheads are included in Other Liabilities in the Balance Sheet
 - a) Provision for Standard assets - Rs.1085.80 mn
 - b) Provision for Unhedged Foreign Currency Exposure (UFCE) - Rs.26.24 mn

However they are shown under Tier II capital for computation of Regulatory Capital (S.No.50 - DF-11) as noted in brackets as per extant RBI guidelines.

Step 3

Extract of Basel III common disclosure template (with added column) - Table DF-11 (Part I / Part II whichever, applicable)			
Common Equity Tier 1 capital: instruments and reserves			
		Component of regulatory capital reported by bank	Source based on reference numbers / letters of the balance sheet under the regulatory scope of consolidation from step 2
1	Directly issued qualifying common share (and equivalent for non-joint stock companies) capital plus related stock surplus	9099.15	2 & 3 (c)
2	Retained earnings	32290.34	3 (a,b,d,f&g)
3	Accumulated other comprehensive income (and other reserves)	—	
4	Directly issued capital subject to phase out from CET1 (only applicable to non-joint stock companies)	—	
5	Common share capital issued by subsidiaries and held by third parties (amount allowed in group CET1)	—	
6	Common Equity Tier 1 capital before regulatory adjustments	41389.49	(Total of 1 & 2)
7	Prudential valuation adjustments	—	—
8	Goodwill (net of related tax liability)	—	

Table DF-13
Main Features of Regulatory Capital Instruments

Table DF-13 : Main Features of Regulatory Capital Instruments (Equity Shares & Bond Series I, II)			
Disclosure template for main features of Regulatory Capital Instruments			
	Description	Equity Shares	Bond Series II
1	Issuer	City Union Bank Ltd	↑
2	Unique identifier (e.g. CUSIP, ISIN or Bloomberg identifier for private placement)	INE491A01021	
3	Governing law(s) of the instrument	Applicable Indian Statutes and regulatory requirements	
	Regulatory treatment		
4	Transitional Basel III rules	Common Equity Tier I	
5	Post-transitional Basel III rules	Common Equity Tier I	
6	Eligible at solo / group / group & solo	Solo	
7	Instrument type	Common Equity Shares	
8	Amount recognized in regulatory capital (Rs. in million, as of most recent reporting date)	731.89 million	NIL
9	Par value of instrument	Re.1 per equity share	
10	Accounting classification	Shareholder's Equity	
11	Original date of issuance	Various dates	
12	Perpetual or dated	Perpetual	
13	Original maturity date	No Maturity	
14	Issuer call subject to prior supervisory approval	Not Applicable	
15	Optional call date, contingent call dates and redemption amount	Not Applicable	
16	Subsequent call dates, if applicable	Not Applicable	
	Coupons / dividends	Dividend	↓
17	Fixed or floating dividend / coupon	Not Applicable	

18	Coupon rate and any related index	Not Applicable	↑
19	Existence of a dividend stopper	Not Applicable	
20	Fully discretionary, partially discretionary or mandatory	Fully Discretionary	
21	Existence of step up or other incentive to redeem	No	
22	Noncumulative or cumulative	Non-cumulative	
23	Convertible or non-convertible	Not Applicable	
24	If convertible, conversion trigger(s)	Not Applicable	
25	If convertible, fully or partially	Not Applicable	
26	If convertible, conversion rate	Not Applicable	
27	If convertible, mandatory or optional conversion	Not Applicable	NIL
28	If convertible, specify instrument type convertible into	Not Applicable	
29	If convertible, specify issuer of instrument it converts into	Not Applicable	
30	Write-down feature	No	
31	If write-down, write-down trigger(s)	Not Applicable	
32	If write-down, full or partial	Not Applicable	
33	If write-down, permanent or temporary	Not Applicable	
34	If temporary write-down, description of write-up mechanism	Not Applicable	
35	Position in subordination hierarchy in liquidation (specify instrument type immediately senior to instrument)	Subordinated Claim at the time of liquidation	
36	Non-compliant transitioned features	No	↓
37	If yes, specify non-compliant features	No	

Table DF-14

Full Terms and Conditions of Regulatory Capital Instruments

The details of the Tier II capital [Bonds] raised by the Bank

NIL

Table DF-16: Equities – Disclosure for Banking Book Positions

There are no equity investments as on 30.09.2018 under Banking Book (HTM).

Leverage Ratio

Leverage ratio is a non-risk based measure of all exposures for the Tier-I capital. The leverage ratio is calibrated to act as a credible supplementary measure to the risk based capital requirements. The Basel III leverage ratio is defined as the capital measure (the numerator) divided by the exposure measure (the denominator), with this ratio expressed as a percentage. Presently the indicative benchmark Leverage Ratio prescribed by RBI is 4.50% (minimum).

$$\text{Leverage Ratio} = \frac{\text{Capital Measure (Tier I Capital)}}{\text{Exposure Measure}}$$

Table DF 17- Summary comparison of accounting assets vs. leverage ratio exposure measure		
	Item	30.09.2018 (Rs. In Million)
1	Total consolidated assets as per published financial statements	415305.88
2	Adjustment for investments in banking, financial, insurance or commercial entities that are consolidated for accounting purposes but outside the scope of regulatory consolidation	(0.43)
3	Adjustment for fiduciary assets recognized on the balance sheet pursuant to the operative accounting framework but excluded from the leverage ratio exposure measure	-----
4	Adjustments for derivative financial instruments	1592.07
5	Adjustment for securities financing transactions (i.e. repos and similar secured lending)	-----
6	Adjustment for off-balance sheet items (i.e. conversion to credit equivalent amounts of off- balance sheet exposures)	18752.31
7	Other adjustments (intangible)	(196.65)
8	Leverage ratio exposure	435453.18

Table DF 18: Leverage ratio common disclosure template – 30.09.2018		
	Item	Leverage ratio framework (Rs. In Million)
On – balance sheet exposures		
1	On-balance sheet items (excluding derivatives and SFTs, but including collateral)	415305.88
2	(Asset amounts deducted in determining Basel III Tier 1 capital)	(197.08)
3	Total on-balance sheet exposures (excluding derivatives and SFTs) (sum of lines 1 and 2)	415108.80
Derivative Exposures		
4	Replacement cost associated with all <i>derivative</i> transactions (i.e. net of eligible cash variation margin)	1592.07
5	Add-on amounts for PFE associated with <i>all</i> derivative transactions	----
6	Gross-up for derivatives collateral provided where deducted from the balance sheet assets pursuant to the operative accounting framework	----
7	(Deductions of receivables assets for cash variation margin provided in derivative transactions)	----
8	(Exempted CCP leg of client-cleared trade exposures)	----
9	Adjusted effective notional amount of written credit derivatives	----
10	(Adjusted effective notional offsets and add-on deductions for written credit derivatives)	----
11	Total derivative exposures (sum of lines 4 to 10)	1592.07
Securities financing transaction exposures		
12	Gross SFT assets (with no recognition of netting), after adjusting for sale accounting transactions	----
13	(Netted amounts of cash payables and cash receivables of gross SFT assets)	----
14	CCR exposure for SFT assets	----
15	Agent transaction exposures	----
16	Total securities financing transaction exposures (sum of lines 12 to 15)	----
Other off-balance sheet exposures		
17	Off-balance sheet exposure at gross notional amount	47111.49
18	(Adjustments for conversion to credit equivalent amounts)	(28359.18)
19	Off-balance sheet items (sum of lines 17 and 18)	18752.31
Capital and total exposures		
20	Tier 1 capital	41191.98
21	Total exposures (sum of lines 3, 11, 16 and 19)	435453.19
Leverage ratio		
22	Basel III leverage ratio	9.46%